

FABRIC | WALLPAPER | OUTDOOR

MARESCA  
TEXTILES

CHICAGO, IL

[WWW.MARESCATEXILES.COM](http://WWW.MARESCATEXILES.COM)







## MARESCA TEXTILES

---

Maresca Textiles are luxurious printed linens, wallpapers and outdoor fabrics designed by Chicago-based artist Kathryn Faull, available to the interior design trade through her studio and partner showrooms nationwide. With an emphasis placed on creativity and quality craftsmanship, the studio offers a fresh perspective on high-end interior textiles. Inspiration for Kathryn's designs comes from various sources, from architecture to nature to her surroundings in Chicago, IL. The designs are then printed or woven of luxury materials at one of five domestic mills.



## PROCESS

What makes Maresca designs special is that they always originate from handmade marks on paper. Kathryn uses various mark-making techniques like block print, pen and ink, watercolor and resist painting to create motifs and then retains their handmade quality throughout the design process. The result are sophisticated patterns with movement and texture that transition from traditional to modern spaces.







MARESCA  
— TEXTILES —

MARESCA  
— TEXTILES —



MARESCA  
— TEXTILES —



# BOTANICAL COLLECTION

The Botanical Collection draws inspiration from the enchantment of old world tapestries and British decorative textiles. The motifs are rendered in a pen and ink mark-making style, adding a unique handcrafted touch. These exquisite patterns are then beautifully printed on luxurious linen or linen-cotton grounds. While the four patterns work in tandem with one another, each is thoughtfully designed to command attention as a stand alone print.



# HARWICK BOTANICAL: FABRIC + WALLPAPER



Harwick Botanical  
Charcoal  
MT-HARBO-CHCL



Harwick Botanical  
Dusty Pink  
MT-HARBO-DSPK



Harwick Botanical  
Navy  
MT-HARBO-NVY



Harwick Botanical  
Olive  
MT-HARBO-OLV

(WALLPAPER ONLY)



Harwick Botanical  
Copper  
MT-HARBO-COP

(FABRIC ONLY)



Harwick Botanical  
Lavender  
MT-HARBO-LAV

## ABOUT OUR PRINTED LINEN:

Our fabrics are printed on linen or linen/cotton ground materials. Most designs are available on lightweight or upholstery ground options. Upholstery weight grounds are tested up to 15,000 double rubs. Please note, backing and/or stain treatment is suggested if specified in more high-traffic areas. Some signs of wear are expected over time because of the organic nature of the materials.

54" print width

Digitally Printed in Pennsylvania | Screen Printed in California







## DERBY FLORAL: FABRIC



Derby Floral  
Citron  
MT-DERB-CITN



Derby Floral  
Dusty Pink  
MT-DERB-DSPK



Derby Floral  
Olive  
MT-DERB-OLV



Derby Floral  
Province Blue  
MT-DERB-PROV

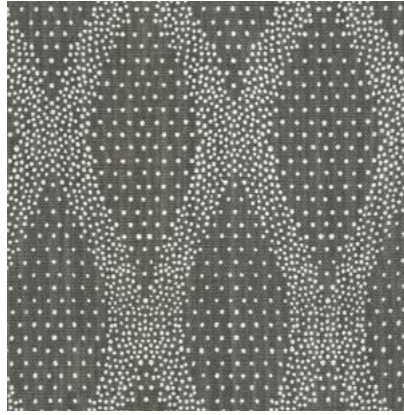




# OGEE DOT: FABRIC



Ogee Dot  
Navy  
MT-OGDT-NVY



Ogee Dot  
Charcoal  
MT-OGDT-CHCL



Derby Floral  
Navy  
MT-DERB-NVY



Ogee Dot  
Olive  
MT-OGDT-OLV





## MADRAS FLORAL: FABRIC



Madras Floral  
Charcoal  
MT-MADFL-CHCL



Madras Floral  
Indigo  
MT-MADFL-IND



Madras Floral  
Russet  
MT-MADFL-RUS



Madras Floral  
Willow  
MT-MADFL-WIL





## HARWICK STRIPE: FABRIC + WALLPAPER



Harwick Stripe  
Charcoal  
MT-HARST-CHCL



Harwick Stripe  
Citron  
MT-HARST-CITN

(FABRIC ONLY)



Harwick Stripe  
Navy  
MT-HARST-NVY



Harwick Botanical  
Plum  
MT-HARST-PLM



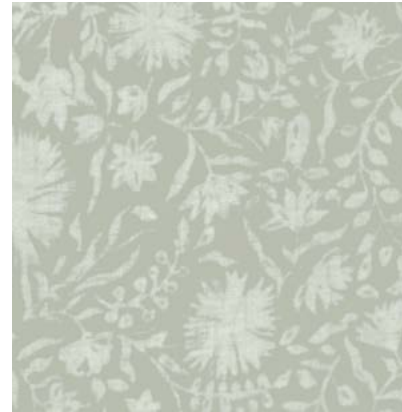
# MADRAS FLORAL: WALLPAPER



Madras Floral  
Charcoal  
MT-MADFL-CHCL



Madras Floral  
Dune  
MT-MADFL-DUNE



Madras Floral  
Sage  
MT-MADFL-SAGE



Madras Floral  
Slate  
MT-MADFL-SLT



Madras Floral  
Olive  
MT-MADFL-OLV

## ABOUT OUR WALLPAPER:

We print our standard wallpaper on a Type II capable, PVC-Free Nolar ground. It has all of the capabilities of a Type II material like mold/mildew resistance, fire resistance and wipeability but has the same luxurious look and hand of a clay-coated paper. The best of both worlds, it fits in pretty much anywhere in the home.

24" print width (double wide available as custom option)

Roll Lengths Available: 9-12ft, 15ft, 30ft

Digitally printed in Chicago, IL



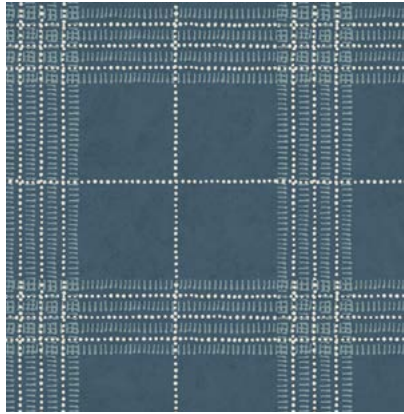




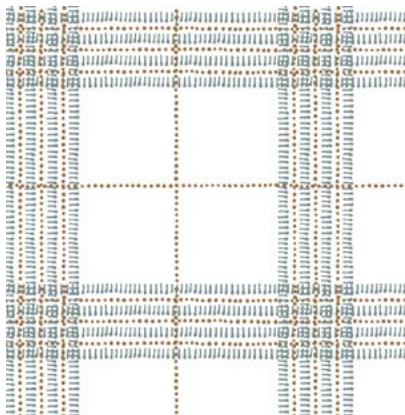
# PRAIRIE STYLE PLAID: WALLPAPER



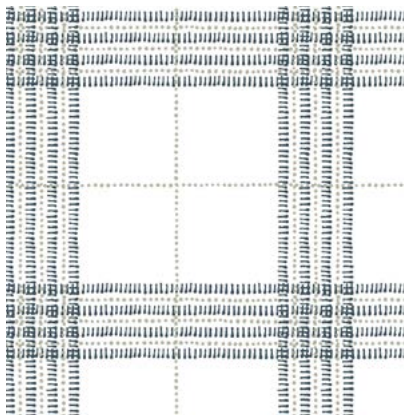
Prairie Style Plaid  
Dark Olive  
MT-PSP-DKOLV



Prairie Style Plaid  
Dark Slate  
MT-PSP-DKSLT



Prairie Style Plaid  
Province Blue  
MT-PSP-PROV



Prairie Style Plaid  
Steelyard  
MT-PSP-STLYD

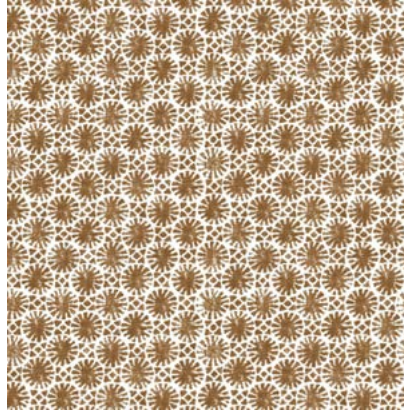




# MADRAS GEO: WALLPAPER



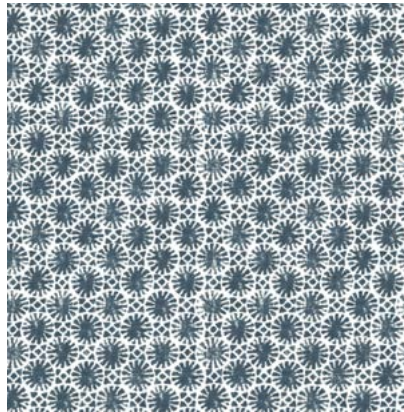
Madras Geo  
Citron  
MT-MADGEO-CITN



Madras Geo  
Copper  
MT-MADGEO-COP



Madras Geo  
Shale  
MT-MADGEO-SHL



Madras Geo  
Slate  
MT-MADGEO-SLT





# PRAIRIE COLLECTION

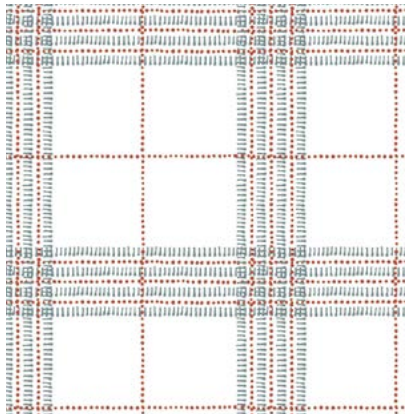
Inspired by the architectural intricacies of Chicago's iconic buildings and the elegant minimalism of the Prairie Style pioneered by architects like Frank Lloyd Wright, the Prairie Collection embodies a harmonious blend of these influences. Various mark making techniques were employed to create patterns that celebrate the handmade and pay homage to the rich architectural heritage of our studio's home town.



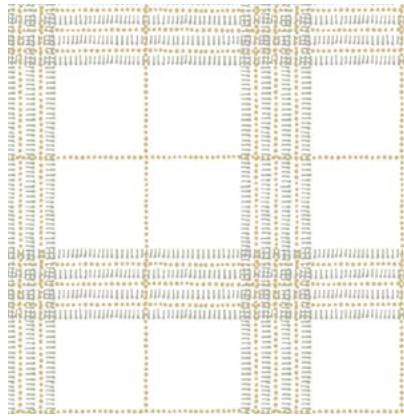




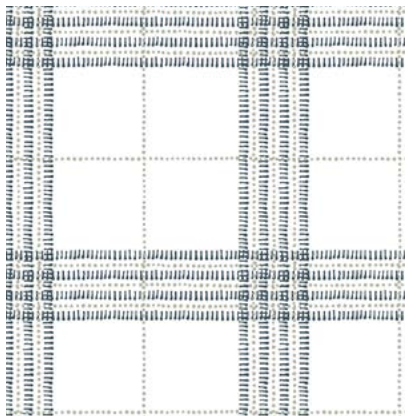
# PRAIRIE STYLE PLAID: FABRIC



Prairie Style Plaid  
Province Blue/Brick  
MT-PSP-PROV



Prairie Style Plaid  
Shale/Hay  
MT-PSP-SHL



Prairie Style Plaid  
Steelyard/Sage  
MT-PSP-STLYD





# RANDOLPH STRIPE: FABRIC



Randolph Stripe  
Brick/Steelyard  
MT-RANDST-BRICK



Randolph Stripe  
Sage/Steelyard  
MT-RANDST-SAGE



Randolph Stripe  
Steelyard/Golden  
MT-RANDST-STLYD





# OAK PARK: WALLPAPER



Oak Park  
Ochre  
MT-OKPK-OCHRE



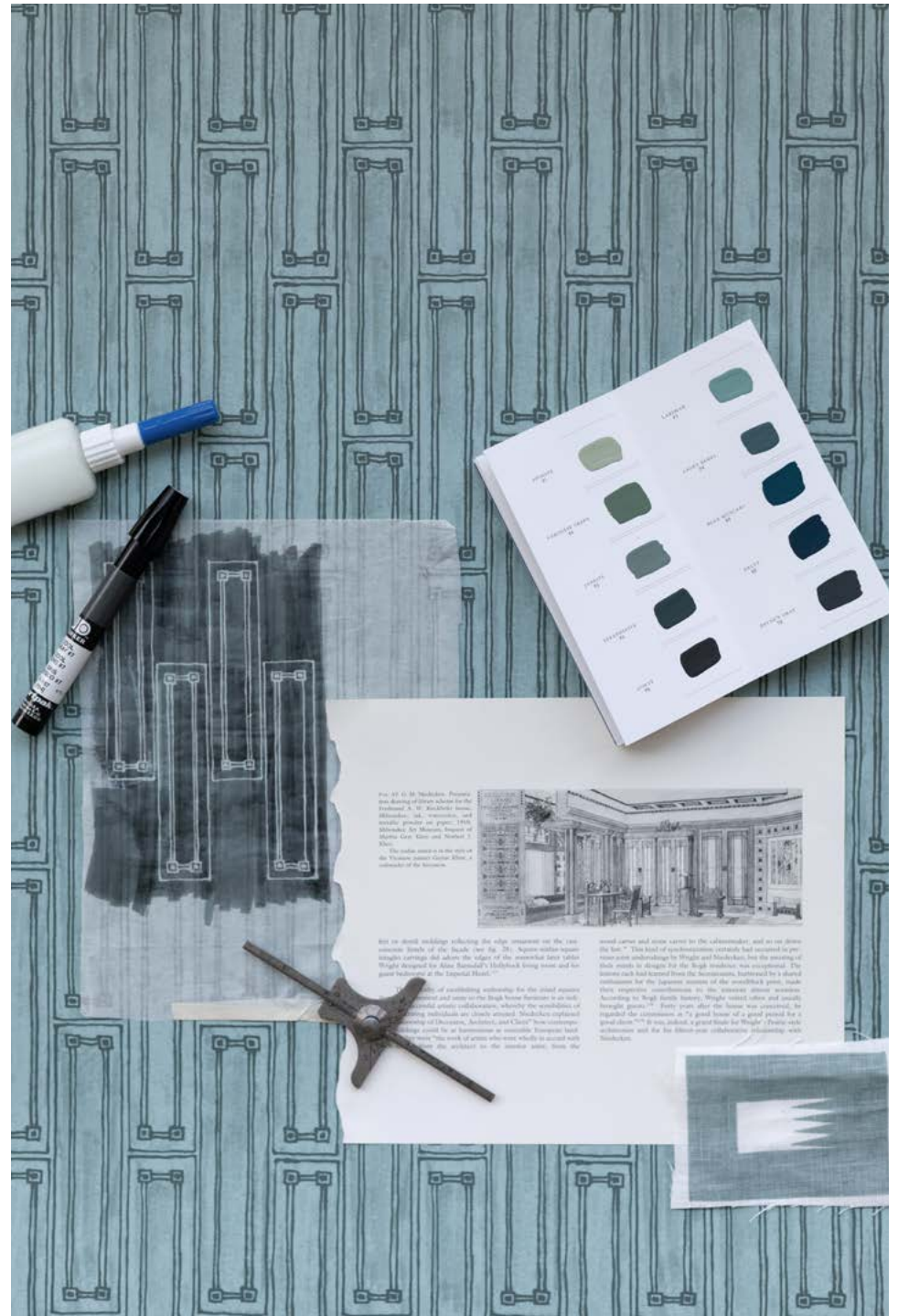
Oak Park  
Shale  
MT-OKPK-SHL



Oak Park  
Steelyard  
MT-OKPK-STLYD



Oak Park  
Sage  
MT-OKPK-SAGE





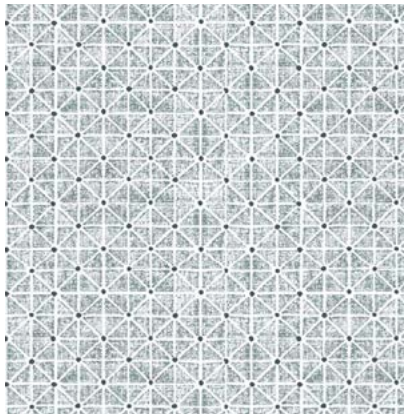
# RANDOLPH: WALLPAPER



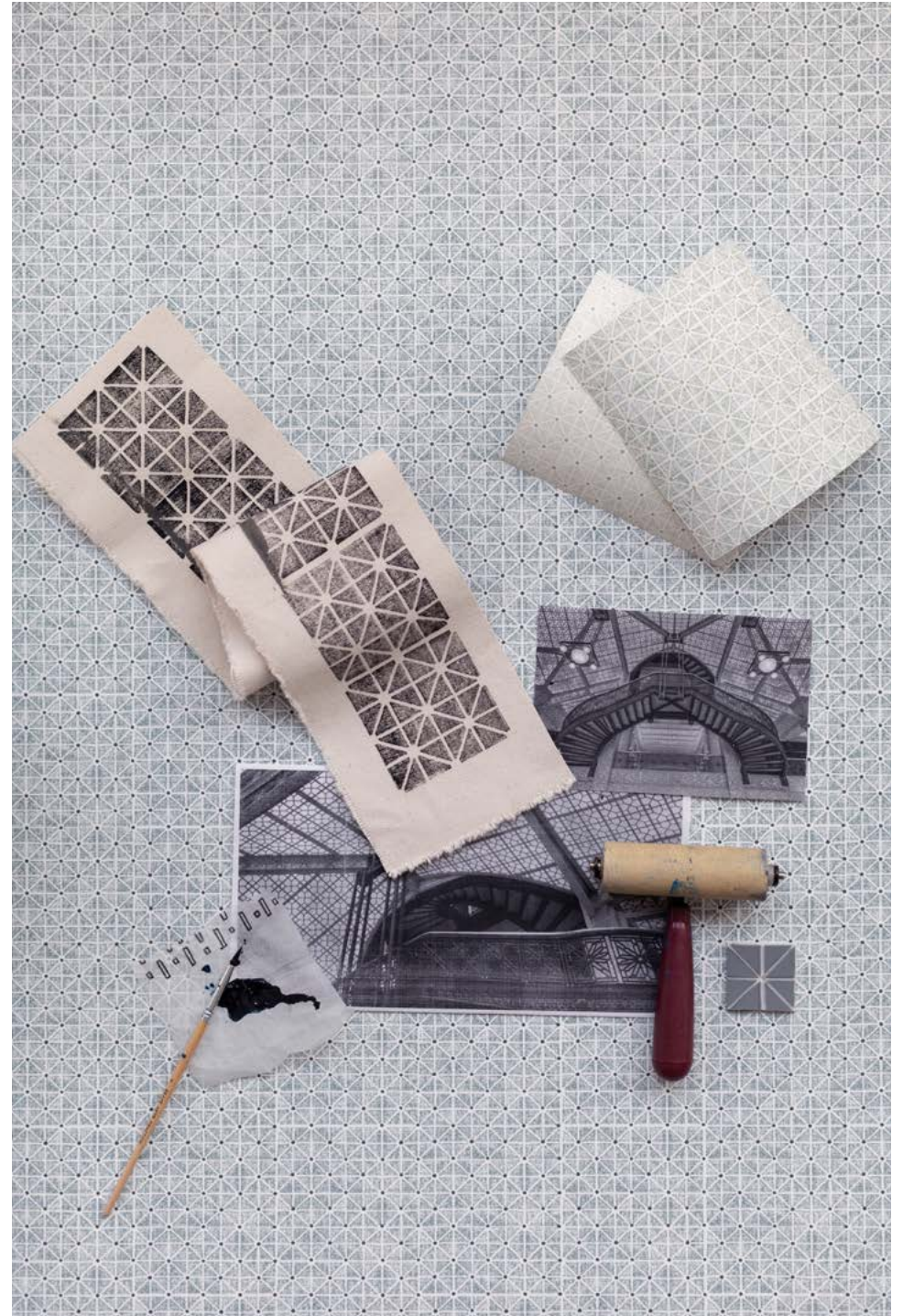
Randolph  
Sage/Ochre  
MT-RAND-SAGE



Randolph  
Shale/Sage  
MT-RAND-SHL



Randolph  
Steelyard/Navy  
MT-RAND-STLYD



# SHIPIBO COLLECTION

The Shipibo Collection draws inspiration from a diverse range of influences, from the intricate embroideries of the Amazon to symbols used in architectural renderings. With a focus on mark making techniques to derive pattern, these prints are meticulously crafted using resist paint and block printing methods, resulting in finished designs that exude a charming hand-drawn aesthetic.







# SHIPIBO: FABRIC



Shipibo  
Charcoal  
MT-SHP-CHCL



Shipibo  
Golden  
MT-SHP-GLDN



Shipibo  
Navy  
MT-SHP-NVY

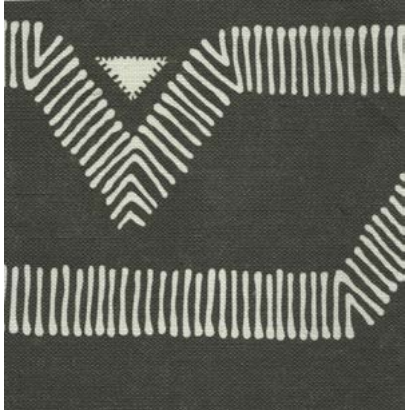


Shipibo  
Willow  
MT-SHP-WIL





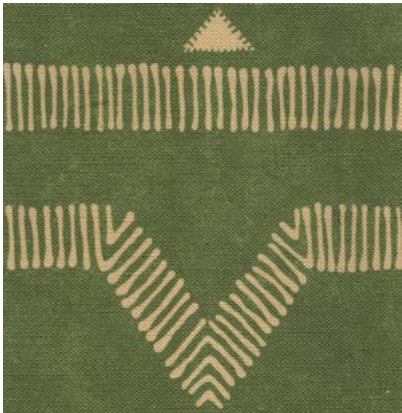
# ARCHES: FABRIC



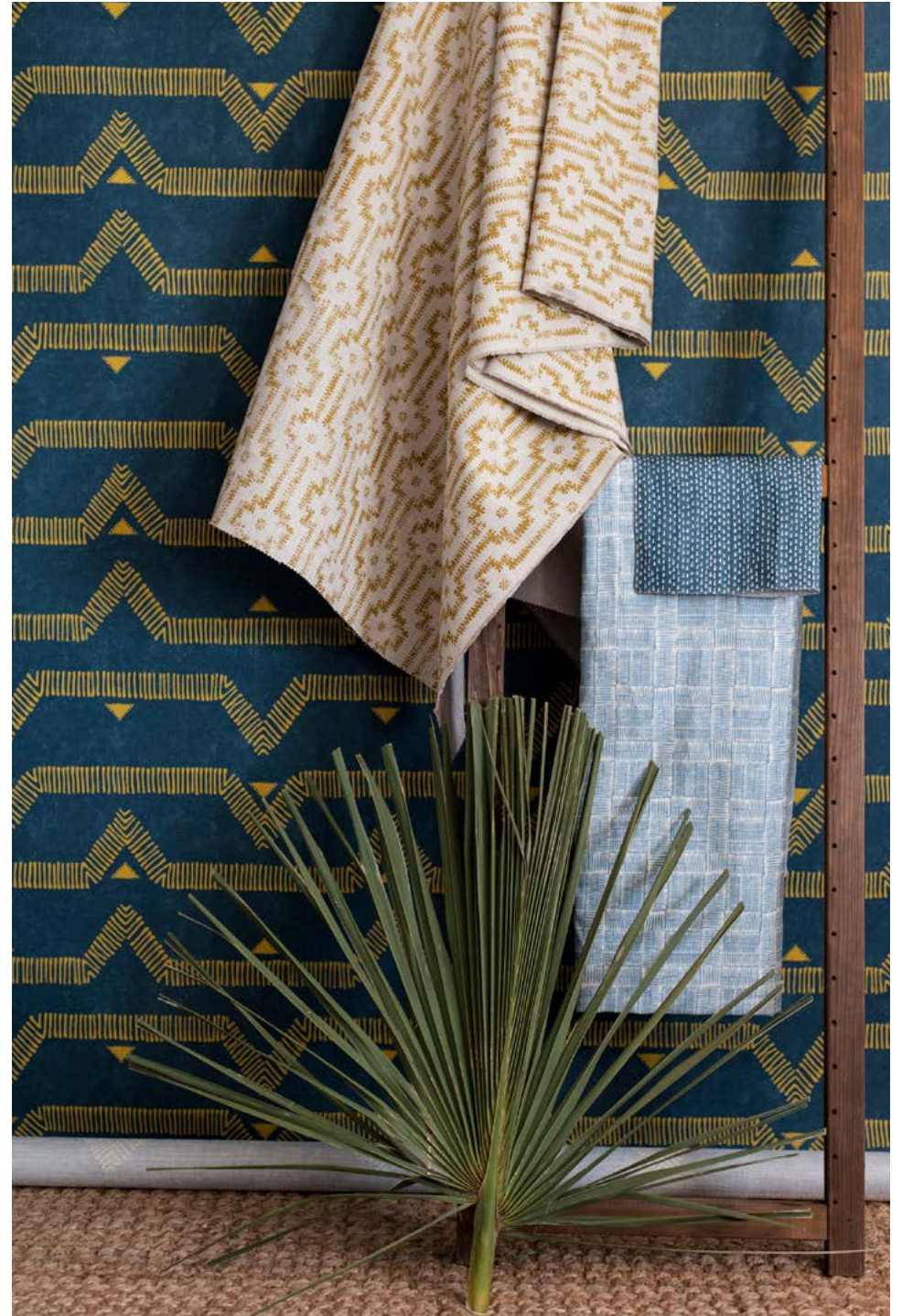
Arches  
Charcoal  
MT-ACHS-CHCL



Arches  
Navy  
MT-ACHS-NVY



Arches  
Willow  
MT-ACHS-WIL





# KANTHA: FABRIC + WALLPAPER

(FABRIC + WALLPAPER COLORWAYS)

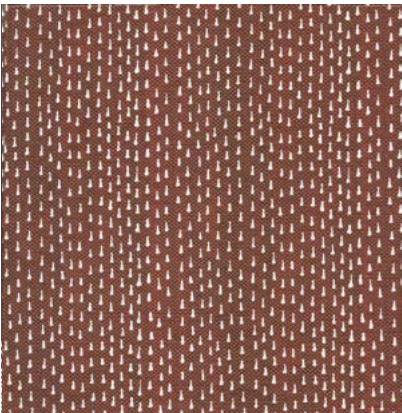


Kantha  
Willow  
MT-KAN-WIL



Kantha  
Navy  
MT-KAN-NVY

(FABRIC ONLY COLORWAYS)



Kantha  
Russet  
MT-KAN-RUS



Kantha  
Charcoal  
MT-KAN-CHCL





# HASH: FABRIC + WALLPAPER

(FABRIC ONLY COLORWAYS)



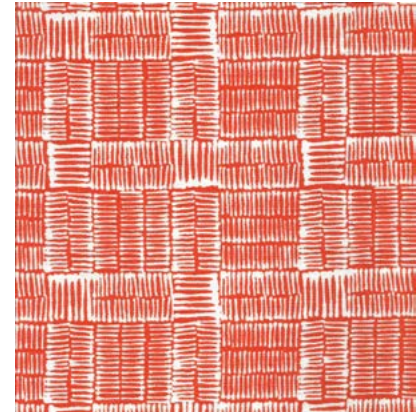
Hash  
Cornflower  
MT-HSH-CNFLR



Hash  
Peach  
MT-HSH-PCH



Hash  
Russet  
MT-HSH-RUS

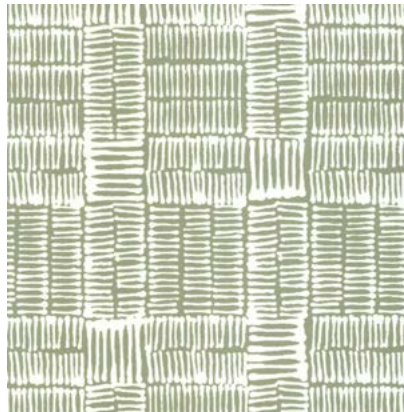


Hash  
Tomato  
MT-HSH-TOM

(FABRIC + WALLPAPER)



Hash  
Shale  
MT-HSH-SHL



Hash  
Willow  
MT-HSH-WIL

(WALLPAPER COLORWAY ONLY)



Hash  
Dark Navy  
MT-HSH-DKNVY







# PALAZZO COLLECTION

The Palazzo Collection draws inspiration from gothic architecture, presenting a unique perspective that reimagines the rustic and ornate elements. Conceptually influenced by the intricate features of historic cathedrals, the fabrics in this collection are crafted using techniques like block printing, watercolor and screen printing. These exquisite designs are artfully applied to a luxurious Belgian linen ground, showcasing a harmonious blend of craftsmanship and artistic expression.



# PISA: FABRIC (LINEN GROUND)



Pisa  
Charcoal  
MT-PISA-CHCL



Pisa  
Cornflower  
MT-PISA-CNFLR



Pisa  
Rust  
MT-PISA-RST



Pisa  
Shale  
MT-PISA-SHL





# PISA: FABRIC (FLAX GROUND)



Pisa  
Brown  
MT-PISA-BRN



Pisa  
Fronde  
MT-PISA-FRD



Pisa  
Navy  
MT-PISA-NVY



Pisa  
Russet  
MT-PISA-RUS

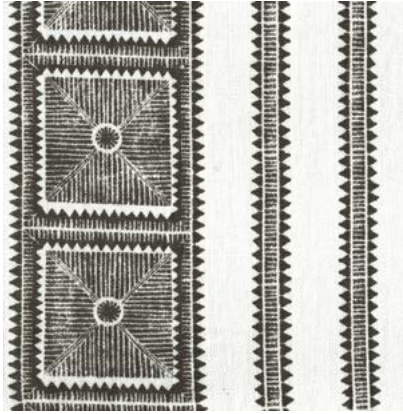




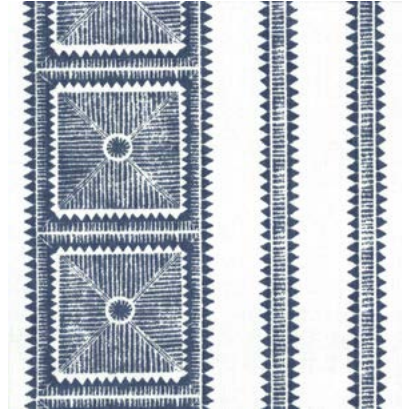




## PALAZZO STRIPE: FABRIC



Palazzo Stripe  
Brown  
MT-PALSTR-BRN



Palazzo Stripe  
Navy  
MT-PALSTR-NVY

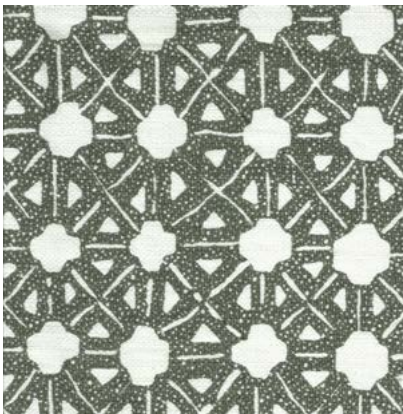


Palazzo Stripe  
Russet  
MT-PALSTR-RUS



Palazzo Stripe  
Navy (Flax)  
MT-PALSTR-NVY-FB

## SEVILLE: FABRIC



Seville  
Fronde  
MT-SEV-FRD



Seville  
Mustard  
MT-SEV-MUS



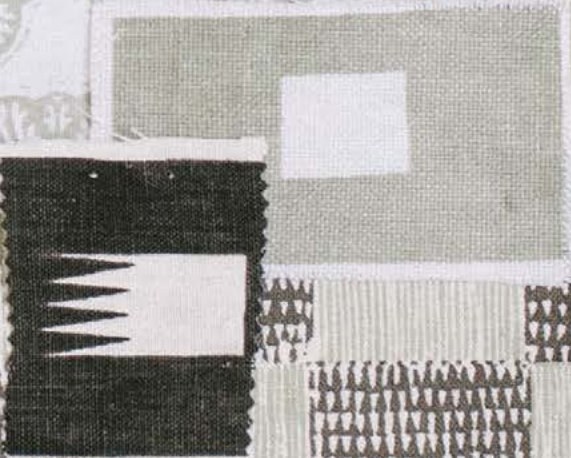
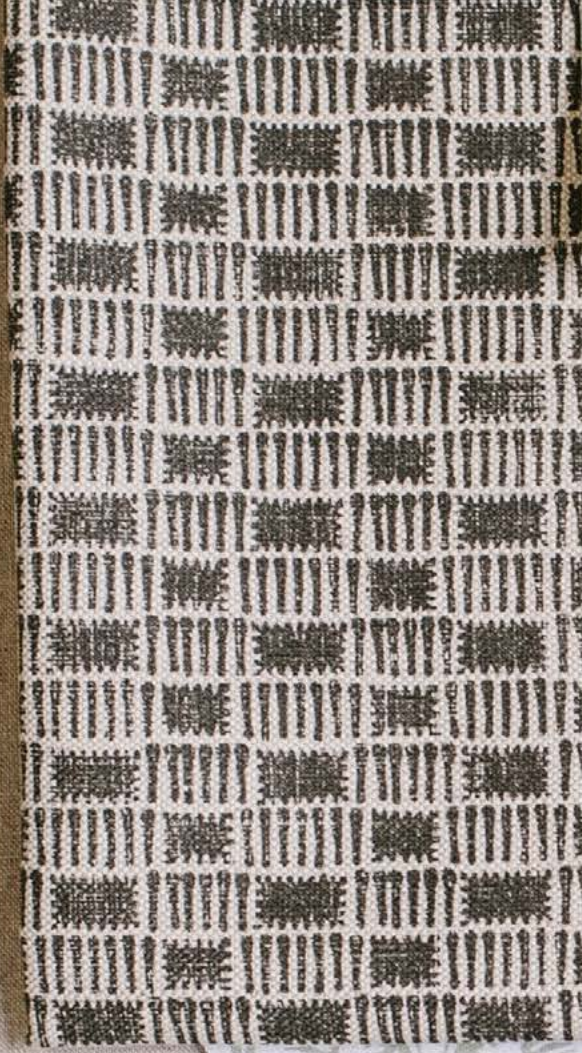
Seville  
Shale  
MT-SEV-SHL



# SMALL SCALE PATTERNS

Our collection boasts a diverse selection of small-scale patterns that perfectly coordinate with our larger-scale designs. Additionally, these patterns possess their own individual charm, making them suitable as standalone designs. Each pattern is available in a wide array of colors and can be further customized to effortlessly blend into any design scheme.



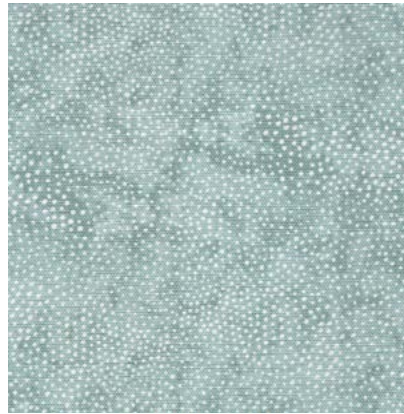




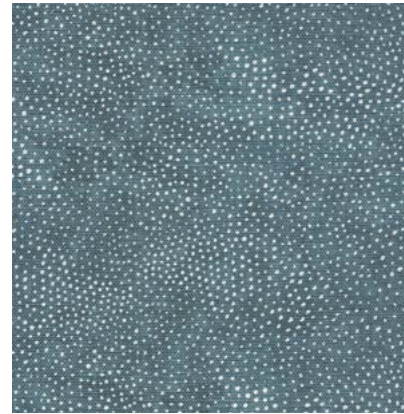
## OXFORD DOT: FABRIC



Oxford Dot  
Brown  
MT-OXDT-BRN



Oxford Dot  
Cornflower  
MT-OXDT-CNFLR

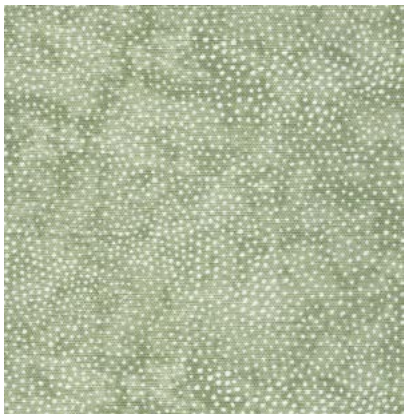


Oxford Dot  
Navy  
MT-OXDT-NVY

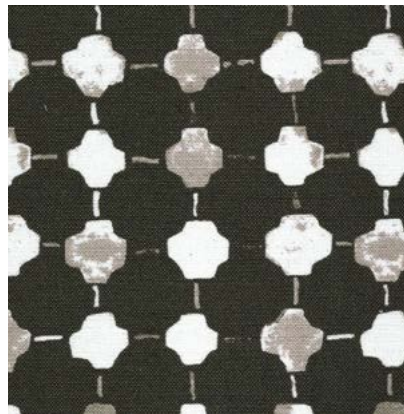


Oxford Dot  
Shale  
MT-OXDT-SHL

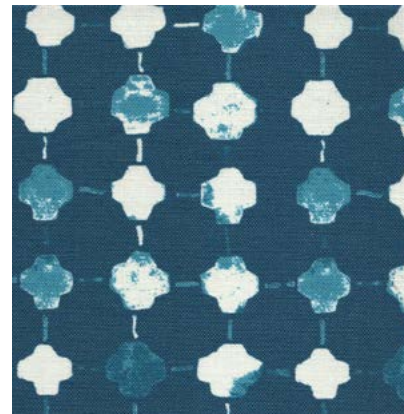
## LAFAYETTE SQUARE: FABRIC



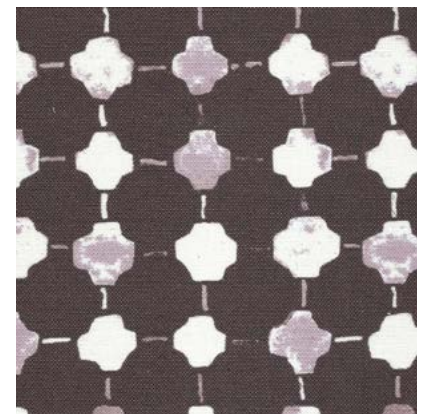
Oxford Dot  
Willow  
MT-OXDT-WIL



Lafayette Square  
Charcoal  
MT-LAFSQ-CHCL



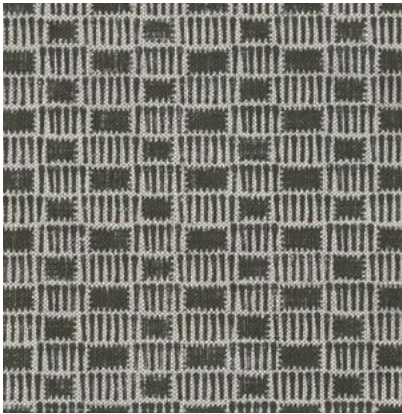
Lafayette Square  
Indigo  
MT-LAFSQ-IND



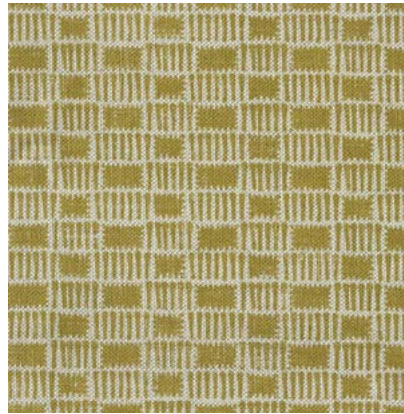
Lafayette Square  
Plum  
MT-LAFSQ-PLM



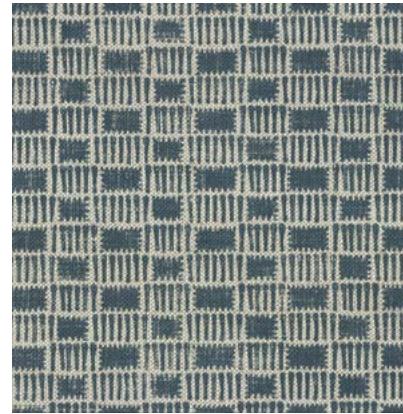
## DASH CHECK: FABRIC



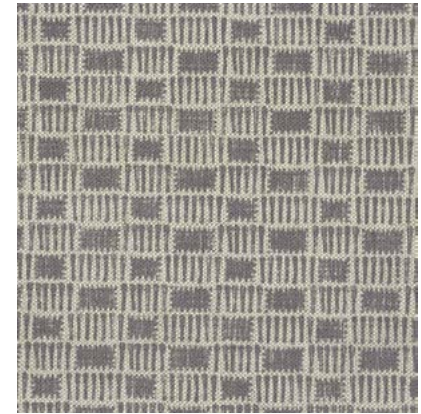
Dash Check  
Charcoal  
MT-DSHCHK-CHCL



Dash Check  
Golden  
MT-DSHCHK-GLDN

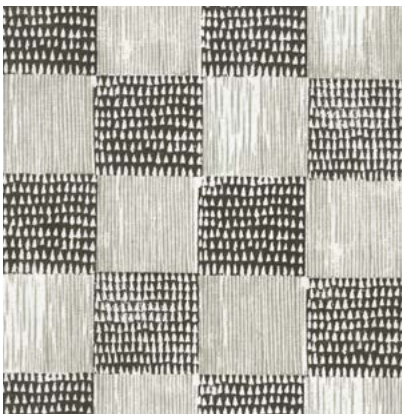


Dash Check  
Navy  
MT-DSHCHK-NVY

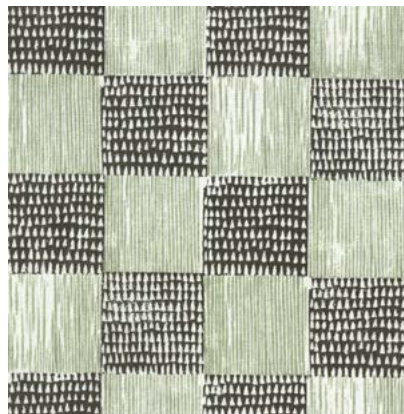


Dash Check  
Plum  
MT-DSHCHK-PLM

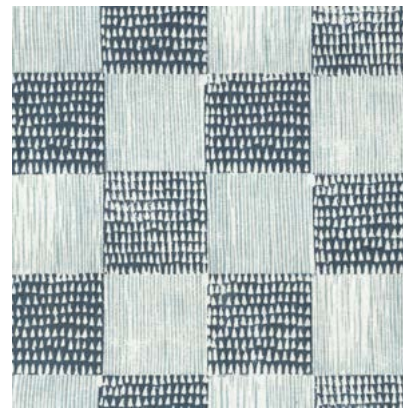
## GUINEA PLAID: FABRIC



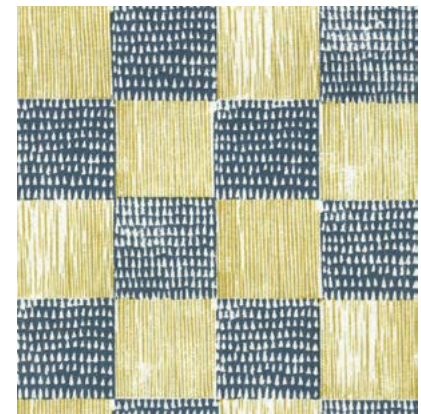
Guinea Plaid  
Charcoal/Shale  
MT-GPLD-CH/SHL



Guinea Plaid  
Charcoal/Willow  
MT-GPLD-CH/WIL



Guinea Plaid  
Navy/Cornflower  
MT-GPLD-NVY/CNFLR



Guinea Plaid  
Navy/Golden  
MT-GPLD-NVY/GLDN



## CALICO DOT: FABRIC



Calico Dot  
Charcoal  
MT-CALDT-CHCL



Calico Dot  
Golden  
MT-CALDT-GLDN



Calico Dot  
Lavender  
MT-CALDT-LAV



Calico Dot  
Navy  
MT-CALDT-NVY

## LA SALLE: FABRIC



Calico Dot  
Willow  
MT-CALDT-WIL



La Salle  
Province Blue  
MT-LASA-PROV



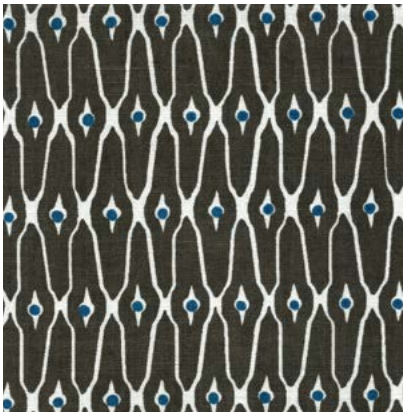
La Salle  
Sage  
MT-LASA-SAGE



La Salle  
Shale  
MT-LASA-SHL



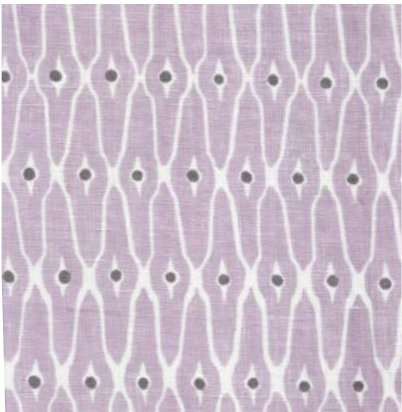
# LATTICE BLOCK: FABRIC



Lattice Block  
Charcoal  
MT-LAT-CHCL



Lattice Block  
Golden  
MT-LAT-GLDN



Lattice Block  
Lavender  
MT-LAT-LAV



Lattice Block  
Navy  
MT-LAT-NVY

# MADRAS GEO: FABRIC



Lattice Block  
Peach  
MT-LAT-PCH



Lattice Block  
Willow  
MT-LAT-WIL



Madras Geo  
Willow  
MT-MADGEO-WIL



Madras Geo  
Turquoise  
MT-MADGEO-TURQ



# OUTDOOR COLLECTION

In collaboration with the skilled weavers of Sunbrella®, we have adapted two of our signature patterns, Pisa and Shipibo, into woven outdoor/performance fabrics. Crafted from solution-dyed acrylic, these fabrics offer exceptional durability and stain resistance, providing a worry-free luxury experience that everyone in the family can enjoy.







## PISA: OUTDOOR

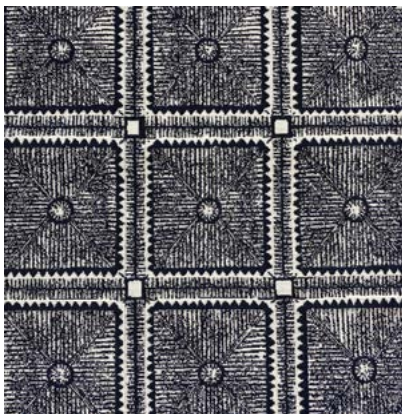


Pisa  
Basalt  
MT-PISA-BASLT

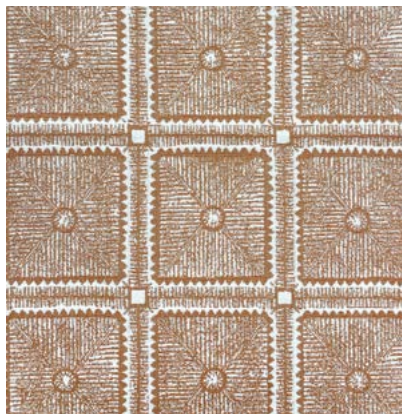


Pisa  
Maize  
MT-PISA-MZE

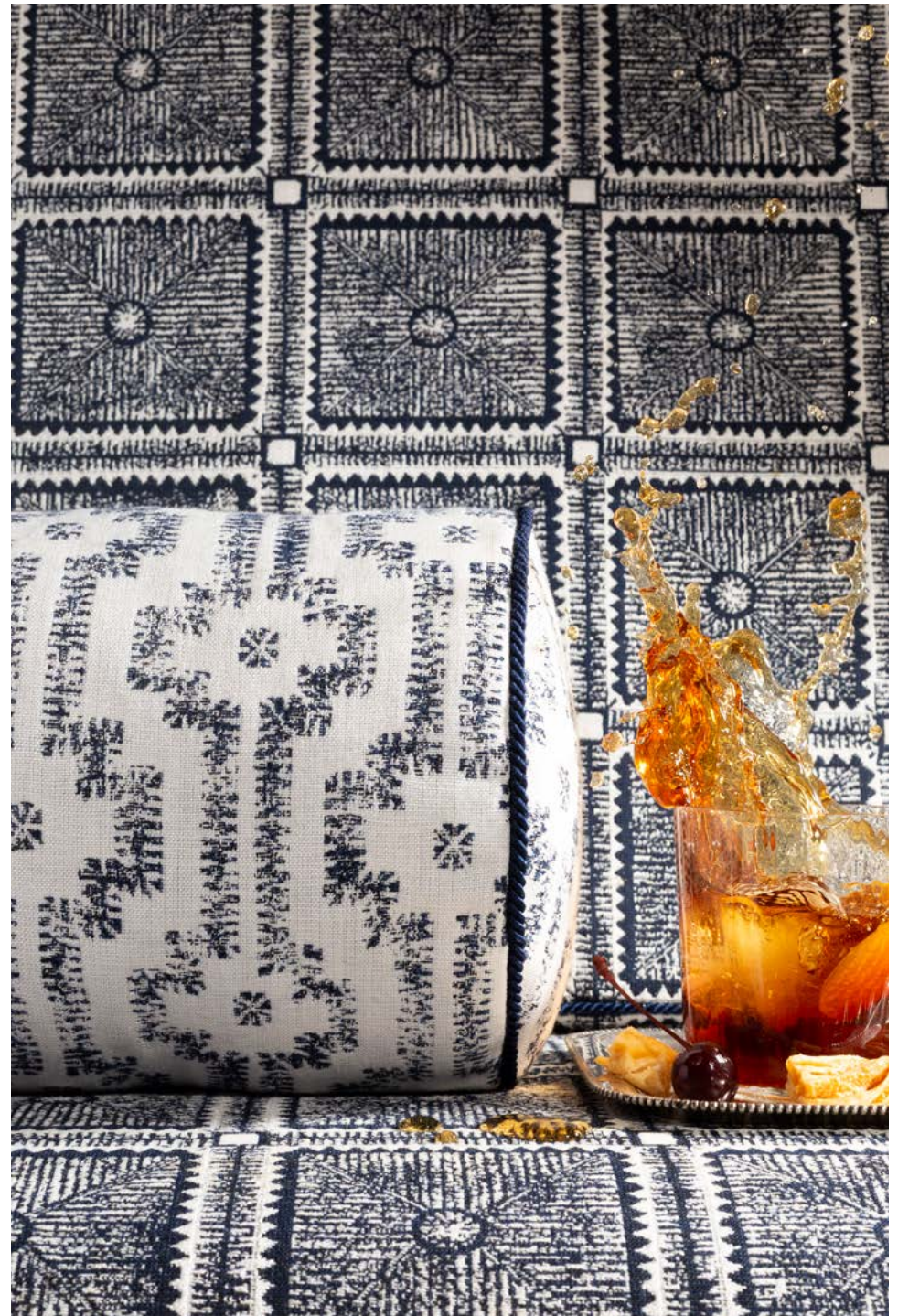
## PISA INVERSE: OUTDOOR



Pisa Inverse  
Deep Indigo  
MT-PISAINV-DPIND



Pisa Inverse  
Nutmeg  
MT-PISAINV-NTMG





## SHIPIBO: OUTDOOR



Shipibo  
Deep Indigo  
MT-SHP-DPIND



Shipibo  
Nutmeg  
MT-SHP-NTMG

## SHIPIBO INVERSE: OUTDOOR



Shipibo Inverse  
Maize  
MT-SHPINV-MZE



Shipibo Inverse  
Taupe  
MT-SHPINV-TPE

