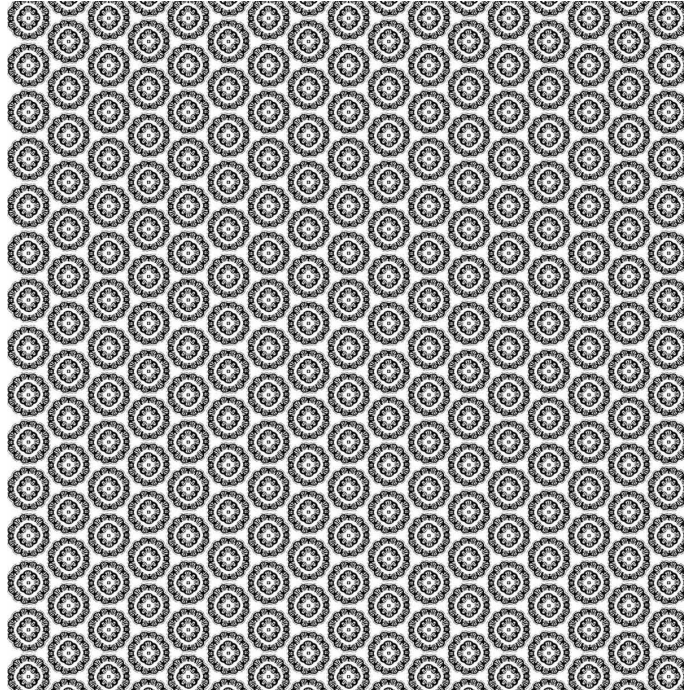


MARESCA TEXTILES



INVERTED MEDALLION

WIDTH: 54"
REPEAT: V-6.25" H-3.75"

BASE FABRIC:
100% LINEN

BASE FABRIC COLOR: WHITE
BASE FABRIC WEIGHT AVAILABLE:
-UPHOLSTERY (20,000 DOUBLE RUB TESTED)
-LIGHTWEIGHT

CUSTOM COLORING AVAILABLE

COLORWAYS:



Navy



Lavender



Golden



Brown



Turquoise



Shale