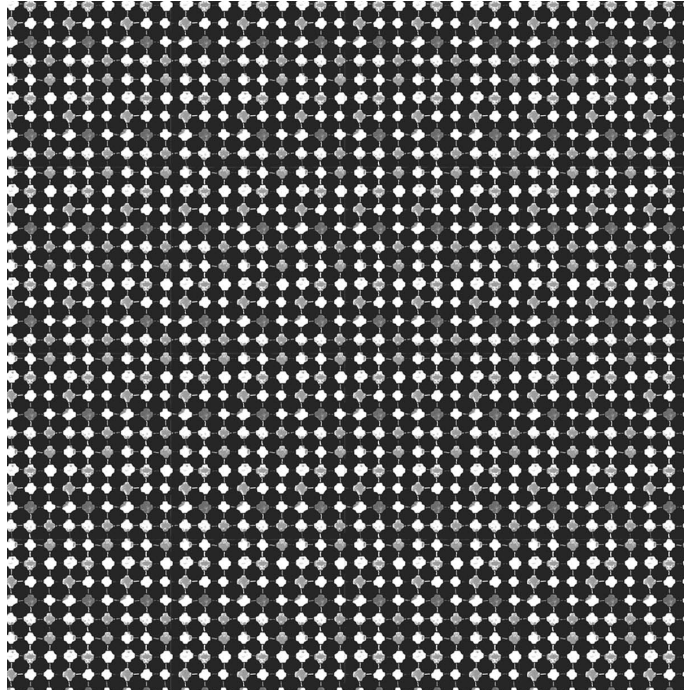


MARESCA TEXTILES



LAFAYETTE SQUARE

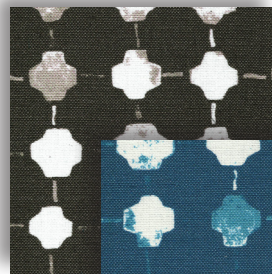
WIDTH: 54"
REPEAT: V-7.5" H-5"

BASE FABRIC:
53% Linen/47% Cotton

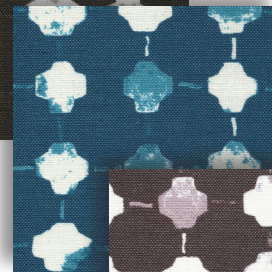
BASE FABRIC COLOR: OYSTER
BASE FABRIC WEIGHT AVAILABLE:
-UPHOLSTERY (15,000 DOUBLE RUB TESTED)
-LIGHTWEIGHT (SAMPLED)

CUSTOM COLORING AVAILABLE

COLORWAYS:



Charcoal



Indigo



Plum