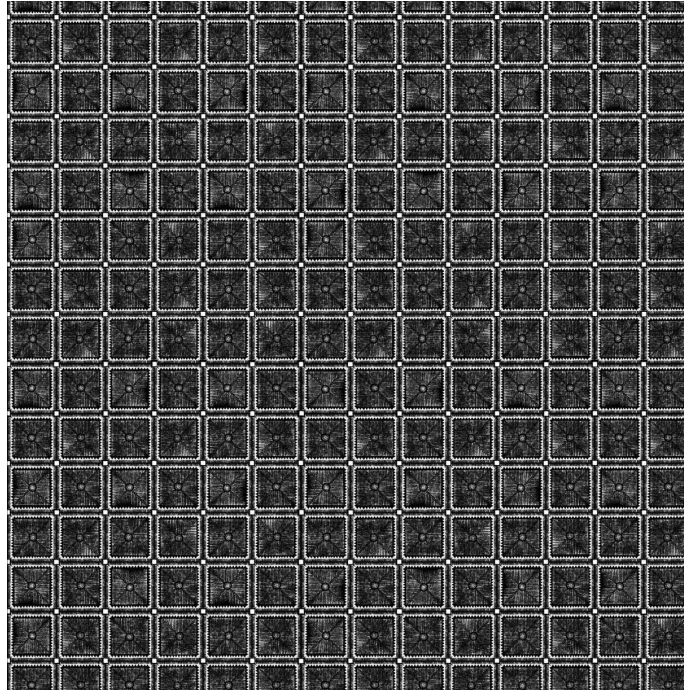


MARESCA TEXTILES



PISA INVERSE OUTDOOR

WIDTH: 54"

REPEAT: V-30" H-28"

CONTENT: 100% solution dyed acrylic

LIGHT FASTNESS: AATCC 169-2003

Option 3: Grade 4 at 2200 kj

FLAMMABILITY: Meets CA #117-2013 Sec. E (CS-191-53)

Classification: 1 Normal Flammability UFAC Interior Fabrics

Test Method-1990 - Meets Class I Requirements

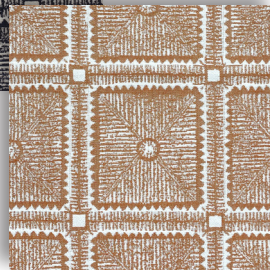
ABRASIONS: (Wysenbeek Double Rub method): 27,000

WARRANTY: 5 years

COLORWAYS:



Deep Indigo



Nutmeg